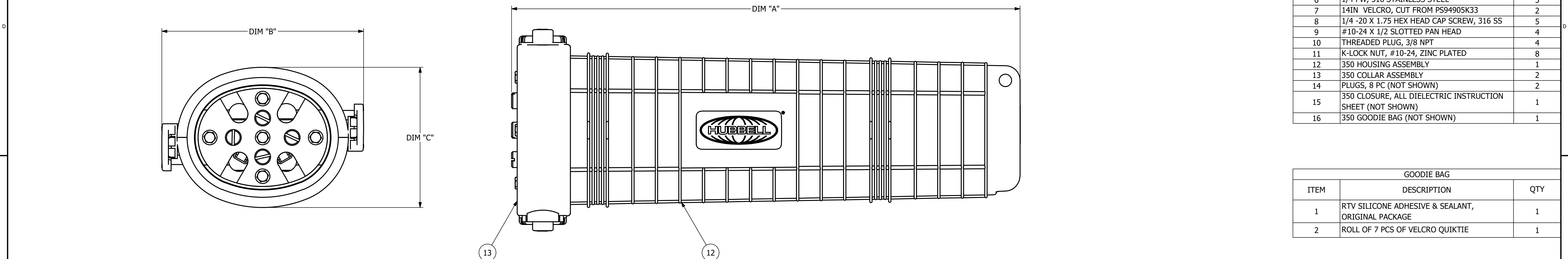


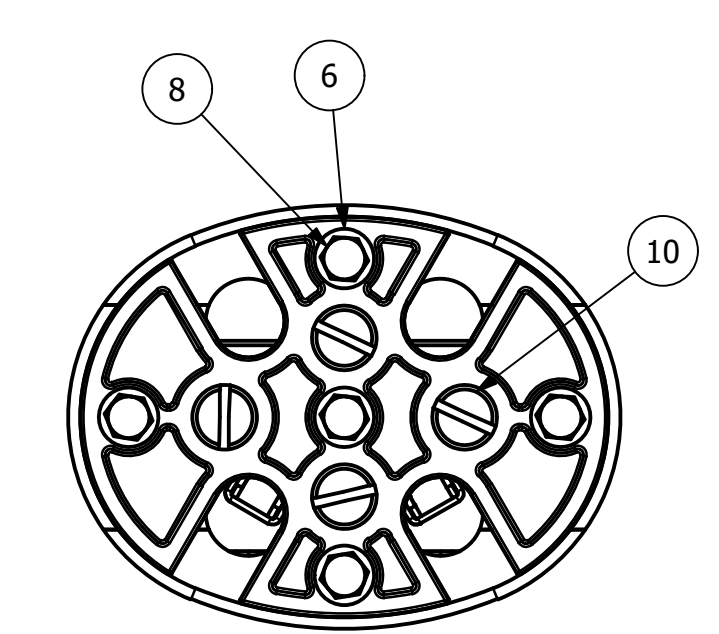
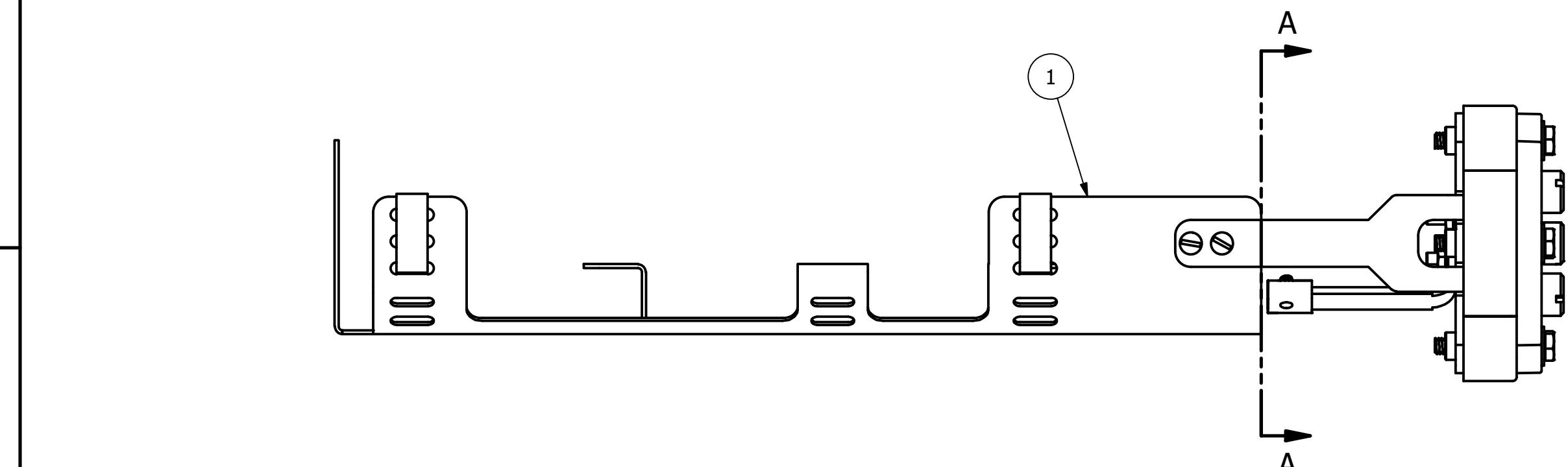
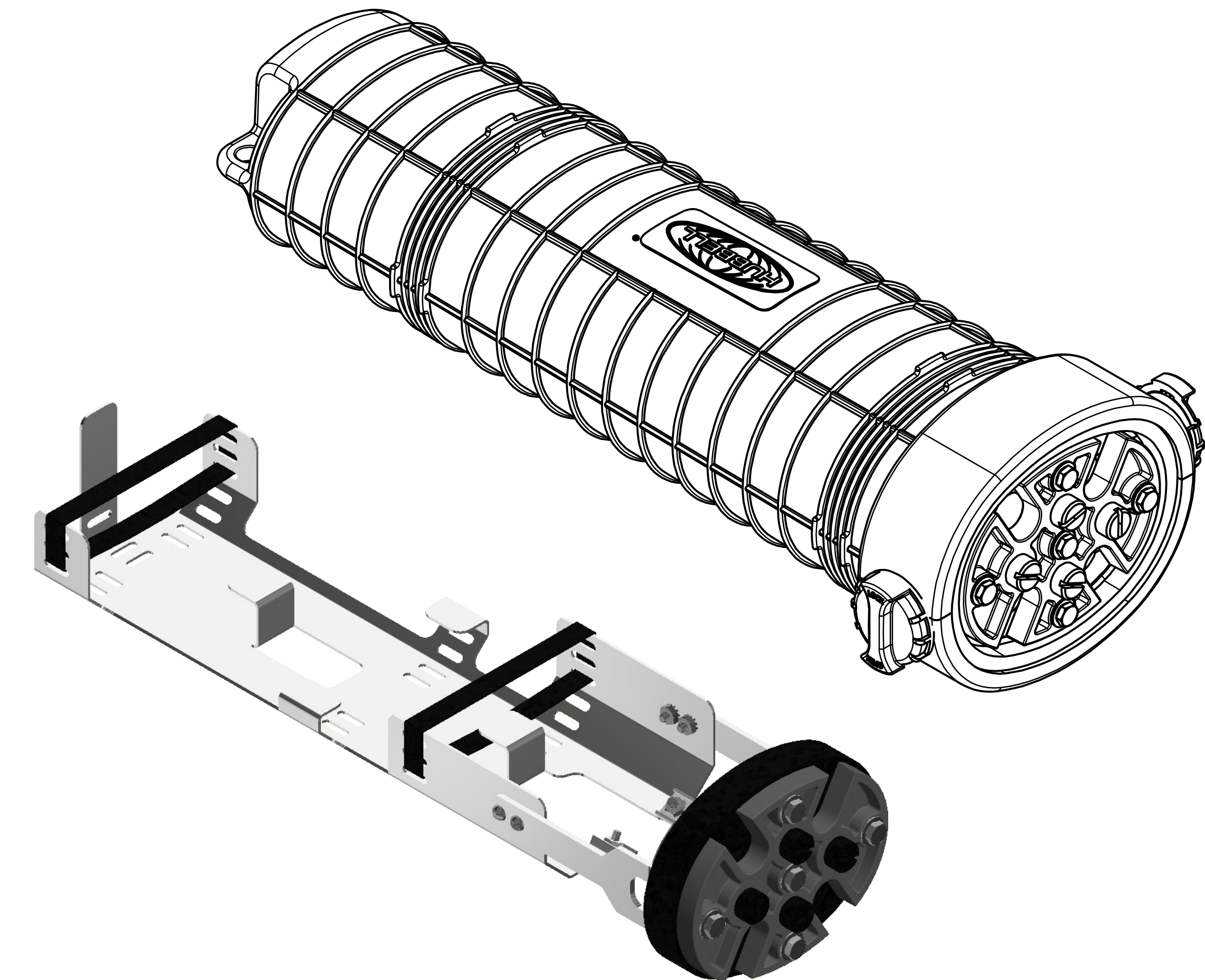
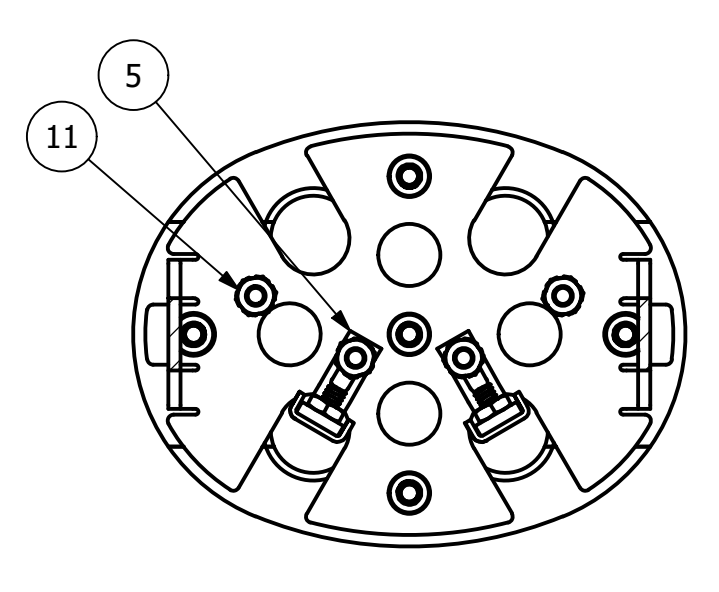
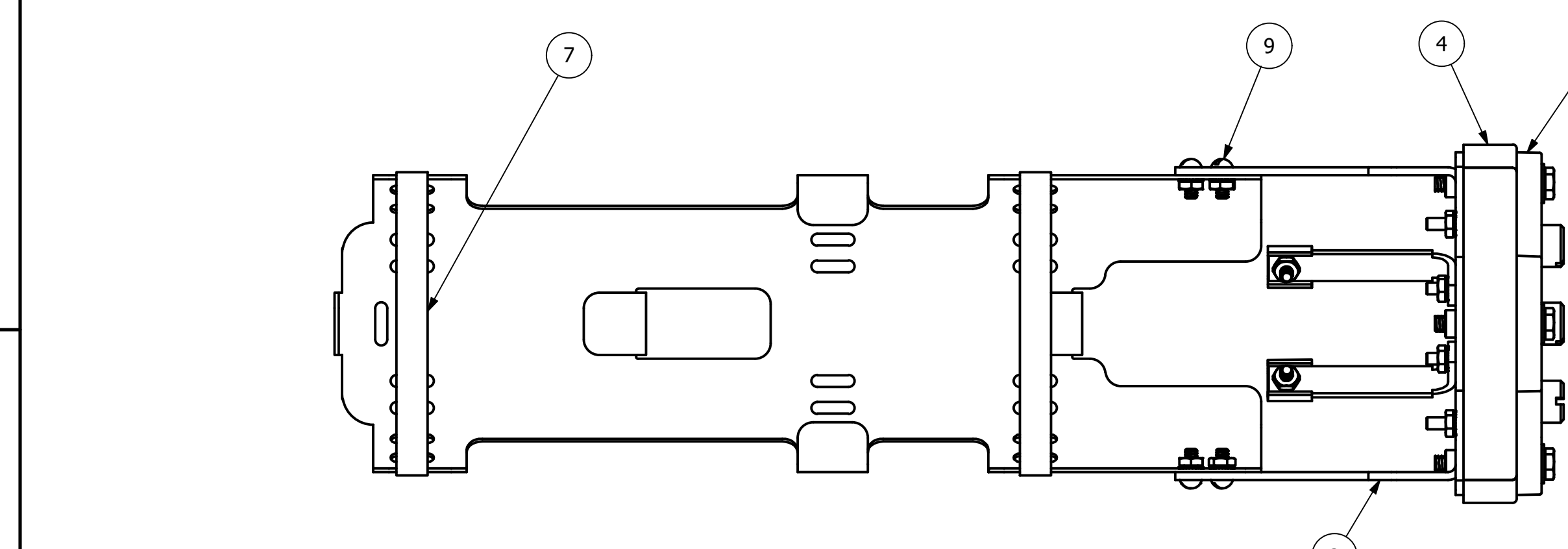
CATALOG NO.	DESCRIPTION	DIM "A" IN. [MM]	DIM "B" IN. [MM]	DIM "C" IN. [MM]	WEIGHT LBS. [KG]	STANDARD PACK	GOODIE BAG
PSCA350S	DOME CLOSURE 350 ALL DIELECTRIC 96 FIBER	21.608 [548.84]	8.575 [217.81]	5.963 [151.45]	7.000 [3.18]	1	1

CABLE TYPE	CABLE PORT CAPACITIES (DIA.)			
	BACKBONE		LATERAL	
	MIN.	MAX.	MIN.	MAX.
ADSS	.250"	.625"	.250"	.625"

ITEM	DESCRIPTION	QTY
1	350 STORAGE PLATFORM	1
2	OUTSDIE PLATE, 48 FIBER	1
3	350 INSIDE PLATE ASSEMBLY	1
4	350 ELASTOMER	1
5	STAND OFF BRACKET	2
6	1/4 FW, 316 STAINLESS STEEL	5
7	14IN VELCRO, CUT FROM PS94905K33	2
8	1/4 -20 X 1.75 HEX HEAD CAP SCREW, 316 SS	5
9	#10-24 X 1/2 SLOTTED PAN HEAD	4
10	THREADED PLUG, 3/8 NPT	4
11	K-LOCK NUT, #10-24, ZINC PLATED	8
12	350 HOUSING ASSEMBLY	1
13	350 COLLAR ASSEMBLY	2
14	PLUGS, 8 PC (NOT SHOWN)	2
15	350 CLOSURE, ALL DIELECTRIC INSTRUCTION SHEET (NOT SHOWN)	1
16	350 GOODIE BAG (NOT SHOWN)	1



GOODIE BAG		
ITEM	DESCRIPTION	QTY
1	RTV SILICONE ADHESIVE & SEALANT, ORIGINAL PACKAGE	1
2	ROLL OF 7 PCS OF VELCRO QUIKTIE	1



- NOTES:
- ALL DIMENSIONS FOR REFERENCE ONLY. DISTANCE IN. [MM], FORCE LBS. [kN], TORQUE IN. LBS. [N.m], & WEIGHT LBS. [KG]
 - RATINGS:
A. NA
 - CERTIFICATIONS, SPECIFICATIONS, & STANDARDS:
A. NA
 - SUFFIXES & VARIANT CONFIGURATION:
A. NA

EC #	DATE	CHANGED BY	CHECKED BY	APPROVED BY	WEIGHT, LBS
210202004506	02/02/21	MK	AA	SD	SEE TABLE

THIRD ANGLE PROJECTION

CONFIDENTIAL: THIS DRAWING AND ITS CONTENTS ARE CONFIDENTIAL AND THE EXCLUSIVE PROPERTY OF HUBBELL POWER SYSTEMS. NO PUBLICATION, DISTRIBUTION OR COPIES MAY BE MADE WITHOUT THE WRITTEN CONSENT OF HUBBELL POWER SYSTEMS. HUBBELL POWER SYSTEMS UNPUBLISHED ALL RIGHTS RESERVED UNDER THE COPYRIGHT LAWS

HUBBELL POWER SYSTEMS, Inc.			
TITLE ALL DIELECTRIC 350 CLOSURE			
CATALOG NUMBER: SEE TABLE			
SIZE D	DWG NO. CC-27210	PART / ASSY NO. PSCA350S	REV 00
SCALE: 1 : 2	DRN BY: MK	DATE: 01/27/21	SHEET 1 OF 1